



 **schmidt**
a brand of aebi schmidt

Tarron Compact

Snow plough



The Tarron Compact is a solid, multi-blade snow plough ideal for the clean removal of large quantities of packed and even frozen snow in urban areas - roads, car parks, factory premises or private properties. Its' functionality is based on a compacted structure. Lighter frame and lower blade let this plough to be suitable for mounting on the Aebi TT and VT/TP along with many narrow track vehicles and small tractors. In addition, aggressive snow clearing is possible thanks to a blade angle of 32°.

Highlights

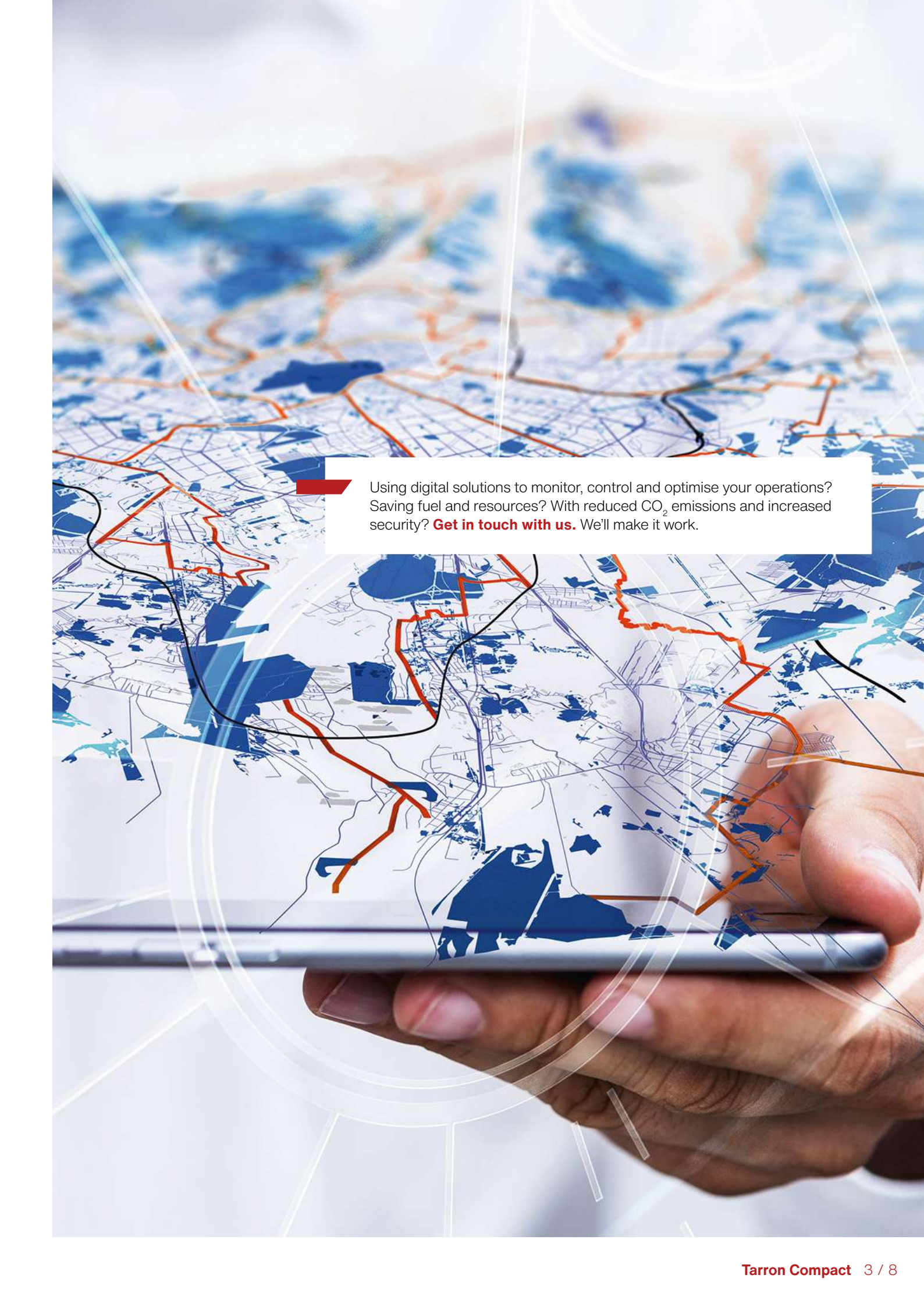
- Very **aggressive snow removal**
- **Compacted structure**
- **Clearing** of even **packed snow and ice**

Your benefits

- **Efficient snow removal** from the right and left side of the snow plough
- **Excellent running smoothness** due to numerous damping elements enables clearing in built-up areas
- **Safe driving over obstacles** without damaging the snow plough thanks to the automatic override system

We know how important it is that your machines and equipment are always ready to deploy. **Get in touch with us** about our range of tailored services and original spare parts.





Using digital solutions to monitor, control and optimise your operations? Saving fuel and resources? With reduced CO₂ emissions and increased security? **Get in touch with us.** We'll make it work.

Performance features

Plough blade

The Tarron Compact is characterised by spring-loaded individual blades, which enable aggressive snow clearance and easily clear packed or frozen snow.

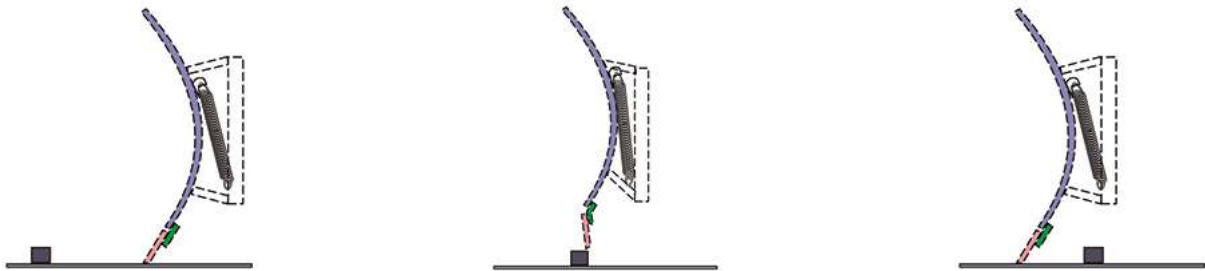
The individual blade suspension ensures the blade segments adapt perfectly to the unevenness of the road surface - which, together with the optimum geometry of the blade/cutting edge, ensures very clean clearing with an excellent clearing pattern.

Furthermore, the blades are raised on the outside to optimise the flow, which results in significantly improved snow removal. The optional polyurethane blade extension offers maximum collision protection and reduces costs.



Override security system

In conjunction with the shock absorber mount, the blade sections can deflect around obstacles to prevent damage. After each obstacle, a powerful blade retaining spring returns the sections back to the clearing position, while a shock absorber mount between the cutting edge and the plough absorbs all the tractive force.



Lifting device

The lifting system with maintenance and noise-free transverse inclination compensation is characterised by identical lifting and swivel cylinders. The pivot point consists of a noise and vibration-reducing polyacetal bushing.

Hydraulic angling system

Lateral adjustment is actuated by two powerful double-action swivel cylinders that position the Tarron in the selected clearing position without backlash.

Working support devices

Castor wheels extend the service life of the cutting edges and allow obstacles to be driven over more smoothly. Castor wheels or sliding shoe is an essential option to ensure the proper function of the overload protection.

Damping

The Tarron Compact is equipped with plastic handlebars, which results in excellent damping properties even during aggressive clearing operations. A shock absorber rail between the cutting edge and plough body further absorbs the high starting energy and reduces noise emissions. The optional snow dust guard is also made of elastic polyurethane.

Kerb deflectors

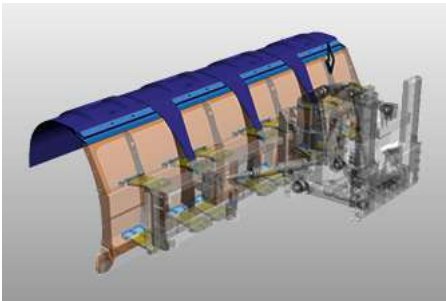
For clearing tasks in inner city areas, kerb deflectors prevent the plough body from grinding off kerbs and edges. The optional polyurethane blade extension offers maximum collision protection. For enhanced anti-corrosion properties, all steel parts are blasted.



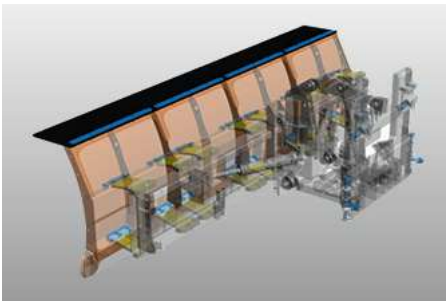
Snow deflector

The optional snow dust protection made of elastic polyurethane with patented gap cover prevents slush from penetrating between the blades. There are three variants to choose from:

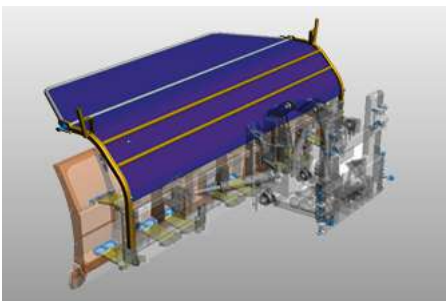
1. An elastic snow deflector made of polyurethane, suitable especially for wet and heavy snow conditions. Due to its special gap covers, it prevents slush from getting between the blades.



2. A snow dust cover made of rubber. The ideal solution for in-town use and slow working speed.



3. An adjustable snow deflector made of cloth. This version is particularly suitable for a dry snow condition.



Mounting

The mounting system consists of a weight-optimised three-link lifting system, an attachment plate with mounting holes, and a hydraulic lifting and lowering device.

With its height-adjustable implement plate and three-point attachment (Cat I - III), the Tarron Compact offers various attachment options to Aebi TT and VT/TP vehicles, along with many narrow track vehicles and tractors.

Options

- Stabilising springs
- Warning markings or flags
- Boundary lights
- Stainless steel light bars adjustable in width and height (with full and dipped beam light)
- Polyurethane coulter extensions (left and right)
- Parking feet with and without wheels

Gallery



Related products

Cirron

Snow plough



CP

Snow plough



Tarron

Snow plough





Trust in our many years of uniquely diverse experience. **Get in touch with us.** We'll find the right solution for your specific challenge.

Technical data

	Tarron MS-C 24	Tarron MS-C 27	Tarron MS-C 30
Dimensions			
Plough height centre	850 mm	850 mm	850 mm
Plough height right and left	950 mm	950 mm	950 mm
Length at cutting edge	2,400 mm	2,700 mm	3,000 mm
Clearing width	1,935 mm at 36°	2,180 mm at 36°	2,430 mm at 36°
Weights			
Approx. weight with steel cutting edges	560 kg	590 kg	630 kg



© Aebi Schmidt Group
www.aebi-schmidt.com

Aebi Schmidt Holding AG
CH-8050 Zurich, Switzerland

All rights reserved. Technical data is subject to change.
Illustrations are not binding. Errors and amendments excepted.

Document created on 20 APR 2024

