

Used machines offer

Aebi | MT770 - Euro6 | 4x4 | 85km\h | 7,5t

Offer number: UM3434911

aebi schmidt
group

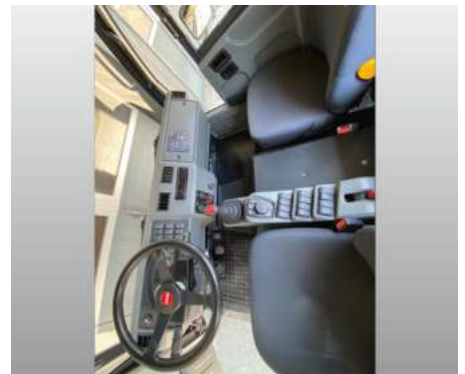
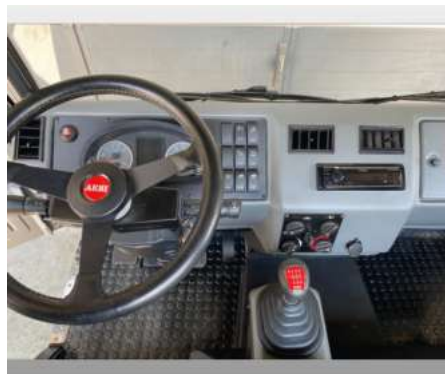


Brand: Aebi
Mat.-Nr.: 1340391-6
Year of manufacture: 2021
Serialnumber: TAH31100EM1360001
Running hours: 0 h
Mileage: 0 km
Condition: Class 5
Location: Switzerland
3401 Burgdorf

Price: **On request**

Compact narrow-track transporter, agile sprinter and multi-functional implement carrier - the Aebi MT offers all this and more! The multi-purpose vehicle offers the advantages of a compact transporter and the versatility of a large tractor-trailer combination

Gallery





Equipment

Basic machine

P1270177-5	Aebi MT750, EU6C, 156HP, 6 cylinders
------------	--------------------------------------

Speed/Propulsion

P1191232-6	Speed limit 85 km/h, 7.5 t
PM7-V00	Permanent 4x4 drive with lockable center differential (recommended for winter service)
PM7-V01/11	Rear axle differential lock
PM7-NB/2	differential lock front axle

Wheelbase/suspension

P1190247-1	Wheelbase 3.10 m
------------	------------------

Seats

PM7-K07/3	Comfort seat with pneumatic self-adjustment for driver
PM7-K06/1	Single seat with suspension and adjustable for passenger

Tires

PM7-R28	245/70 R 17.5 (143/141J) 17.5 x 6.75 SIMPLE
---------	--

Cabin

PM7-C99	Other cabin color - RAL 7021
PM7-K04/9	air conditioning including reversible fan
PM7-K24	central locking via the key
PM7-K03/4	Heated windshield
PM7-K09/7	Heated exterior mirrors
PM7-K10/2	exterior mirror offset to the outside
PM7-E01/1	3-pin external socket for winter service lighting
PM7-K20/2	winter service lighting bar with 4 headlights and Rotating beacon
PM7-E03/1	13-pin external socket for rear attachment for trailer operation

Hydraulics

PM7-H32	3rd circuit 14.4 cc pump motion hydraulics & 21.1 cc pump 2x movement hydraulics, including tilting function, three-way tipper 30l/min max. 200 bar Couplings 1 - 4 at the front right, each double-acting 1 x single-acting for tippers with floating position All couplings can about operated using the joystick 1x prop. adjustable power hydraulics P (pressure) at the rear right and 1x prop.adjustable power hydraulics P (pressure) at the front left Tank return Tand leak oil lines TL can be adjusted individually via joystick. Maximum 50l / 180bar
PM7-H38	1. Front additional valve for movement hydraulics right 1x double action
PM7-H30	(PM7-H31 or PM7-H32). The coupling is size 2
PM7-H39	rear hydraulic connection right movement hydraulics 1x double action Front additional valve on the right (requires PM7-H38). The clutch has the Ba
PM7-H40	2. Front additional valve for movement hydraulics on the left, 1x double action
PM7-H34/1	Continuous operation on circuit 1 with 30 l/min 250 bar (this requires PM35 PM35-H32). Monitoring the circuit using a temperature sensor and software Automatic switch off if the temperature is exceeded. The Continuous operation can be selected via the software. During theDuring continuous operation, the remaining valves are blocked. This option can are for a hook device or a crane

Options

P1283068-0	Radio DAB+/Bluetooth/USB
PM7-K23/2	work light on tripod on the rear wall of the cabin

PM7-A30	front device plate DIN B (size 3)
PM7-T13/2	trailer hitch ball head 3.5 t (type DEDALO GS501)
PM7-14/11	Automatic trailer hitch, rear crossbar and compressed air brake
P1219786-5	Rear axle single, standard springs
P1238859-7	Clutch booster
P1229917-6	SSR professional footwell heater
PM7-H41	1x power hydraulics pulled to the front left with leakage oil line

Contact

Artur Maciejewski
Used Machines Sales Manager



© Aebi Schmidt Group
www.aebi-schmidt.com

Aebi Schmidt Holding AG
CH-8050 Zurich, Switzerland

All rights reserved. Technical data is
subject to change.
Illustrations are not binding. Errors and
amendments excepted.

Document created on 23 APR 2024

